

# Data sheet

## Siber® Standard thermoplastic duct



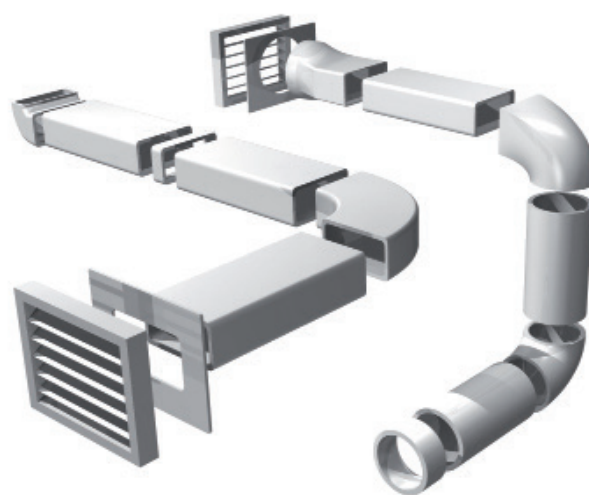
### Modular air distribution system

Duct ventilation network and thermoplastic accessories for single flow (autorregulated or humidity-regulated) systems and double flow ventilation systems. Siber ducts and accessories allow a high efficiency in air conduction thanks to their manufacturing properties.

#### + ADVANTAGE

- ✓ Elimination of vibrations and noises
- ✓ Minimum necessary space of 55mm height
- ✓ Rectangular and circular range
- ✓ Resistance to crushing and breakage
- ✓ Smooth inner wall for better performance
- ✓ Simple fixation of the system
- ✓ Application for ventilation and extraction hoods

#### A system providing:



- + Easy and quick installation
- + Adaptability to architecture
- + Durability and design optimization

### FEATURES

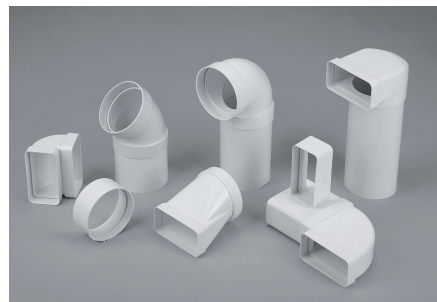
Siber® standard ducts and accessories are designed to comply with all the regulations related to the Technical Building Code (CTE) and the Regulation of Thermal Installations of Buildings (RITE). In addition, they are chemically inert and they cannot cause or favour the appearance of corrosion. They are perfectly designed to be waterproof and for not favouring bacterial growth or oxidation.

TECHNICAL CHARACTERISTICS	
Fire resistance pursuant to UNE EN 13501-1:2002	Self-extinguishing B-s2, d0
Maximum temperature supported	+80°C
CThermal conductivity	0.0544 - 0.0662 W/m.k
Exhaust ventilation performance	up to 92%
Flow supported	< 300 a 600 m3/h
Manufacturing material	Technical thermoplastic



### + COMPATIBLE WITH OTHER SYSTEMS

The Siber thermoplastic network adapts to any architecture thanks to the accessories and ducts in a circular and rectangular range. The system has several dimensions to support different ventilation flows and it is compatible with both single-family and multi-family homes.



	SUPRA	DUPLA	SERIE 500
Dimensions (mm or Ø)	90 x 180	55 x 220	55 x 110
	Ø 150	Ø 125	Ø 100
Flow extraction (m <sup>3</sup> /h)	> 650	550 a 650	< 300
Flow ventilation to 4 m/s	233	174	87

### + QUICK AND EASY INSTALLATION

Modular assembly that allows for quick and easy installation. Fixing is perfect thanks to its male-female anchoring system between the accessory and the duct using aluminum adhesive tape (ref. BA55G).

For a better hold, it is recommended to apply acrylic glue between the duct and the accessories.



### + MAINTENANCE AND PACKAGING

No maintenance is required, although for the extraction of kitchen smoke it is recommended to carry out periodic cleaning of the ducts.

The packaging is conceived in cardboard boxes for transport and storage. It is very important not to expose the ducts to sunlight as it can cause a deterioration of their mechanical properties.

